

REVISION

A	GP	R SKEES
11/7/2007	ECN-82844	
RELEASE FOR PRODUCTION.		

B	EM	T WILD
5/27/2008	ECN-91724	

ADD SHEET 2:		
C	TP	J HENRY
12/19/2008	ECN-102756	

NOTES: CHG NOTE 4 FROM FROM TRAY TO TAPE & REEL, UPDATE BOM FROM TY-SEAM019-PR-40-3.5-10-AP TO CT-SEAM033MS, ADD T&R VIEW, SHEET 3, TOP VIEW SHEET 1, RECOMMENDED PCB LAYOUT SHEET 2, ADD VITA SPEC PINOUTS TO THESE VIEWS, ROWS A THRU K, AND POSITIONS 01-40, ADD K-DOT-.404-.500-.005 TO BOM & AND ALL VIEWS, ADD SHEET 4

D	TW	J HENRY
3/12/2009	ECN-106946	

BOM: ITEM 3 MATERIAL CHG 7% TO 7 % COPPER; SHEET 2, UPDATE FOOTPRINT TO CORRECT LAYOUT

E	TP	J FREEMAN
4/14/2009	ECN-108622	

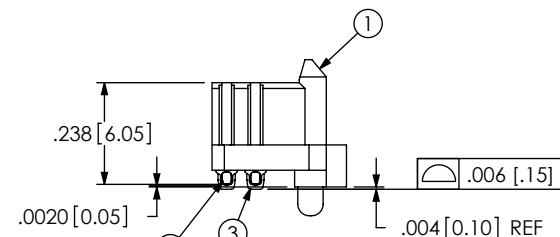
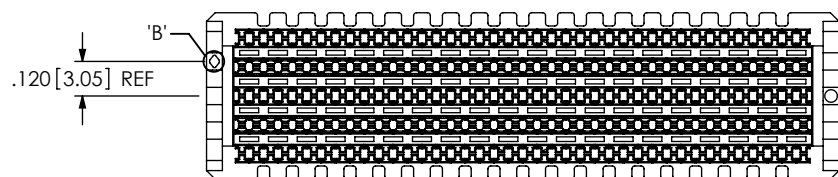
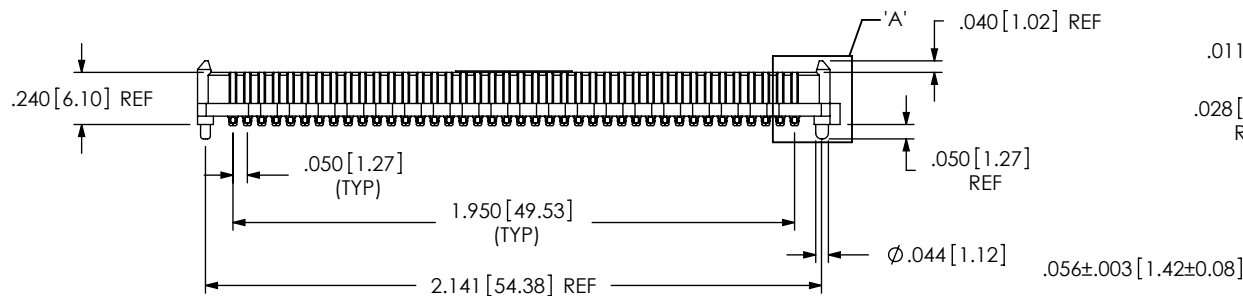
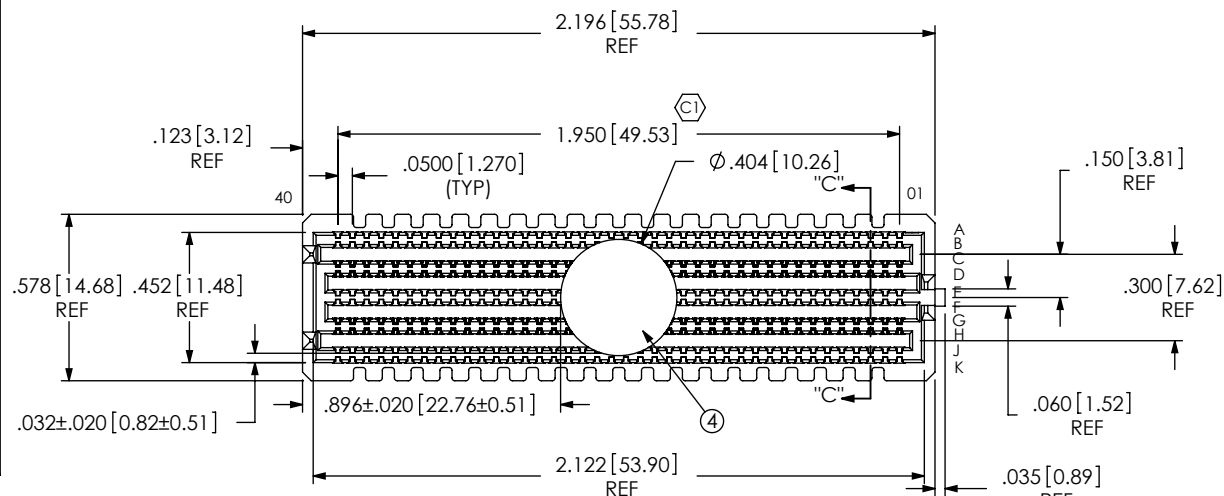
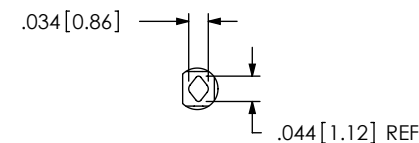
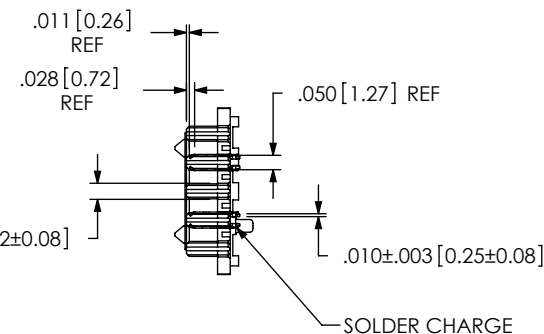
SHEET 1, DETAIL 'A': ADD .238 DIM

F	GP	M BOONE
12/15/2009	ECN-121791	

PAGE 4 STENCIL LAYOUT SHOW ONLY ROWS 3,4,7, AND 8.

NOTES:

1. VITA 57 CONNECTOR.
2. FILL ROWS 03, 04, 07 & -08 ONLY.
3. Ⓢ REPRESENTS A CRITICAL DIMENSION.
4. MINIMUM PUSHOUT FORCE: .75 LB.
5. PARTS TO BE PACKAGED IN TAPE & REEL.

DETAIL 'A'
SCALE 3 : 1DETAIL 'B'
SCALE 3 : 1

SECTION "C"-"C"

UNLESS OTHERWISE SPECIFIED,
DIMENSIONS ARE IN INCHES.

TOLERANCES ARE:

DECIMALS	ANGLES
.XX: ±.01 [.3]	2 °
.XXX: ±.005 [.13]	
.XXXX: ±.0020 [.051]	

PROPRIETARY NOTE

THIS DOCUMENT CONTAINS INFORMATION
CONFIDENTIAL AND PROPRIETARY TO
SAMTEC, INC. AND SHALL NOT BE REPRODUCED
OR TRANSFERRED TO OTHER DOCUMENTS OR
DISCLOSED TO OTHERS OR USED FOR ANY
PURPOSE OTHER THAN THAT WHICH IT WAS
OBTAINED WITHOUT THE EXPRESSED WRITTEN
CONSENT OF SAMTEC, INC.

DO NOT SCALE DRAWING SHEET SCALE: 1:0.666667

PLATING:

CONTACT AREA: .000030 GOLD OVER .000050 NICKEL
REMAINDER: .000200 REF TIN OVER .000050 NICKEL
SOLDER COMPOSITION: 95.5% TIN/3.8% SILVER/7%
COPPER CHARGE TAIL

F:\dwg\sw\asp\134000\ASP-134604-01.SLDRW

samtec

520 PARK EAST BLVD, NEW ALBANY, IN 47150
PHONE: 812-944-6733 FAX: 812-948-5047
e-Mail: info@SAMTEC.com code: 55322

DESCRIPTION:

.050 PITCH TERMINAL ARRAY ASSEMBLY

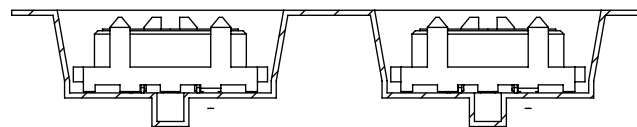
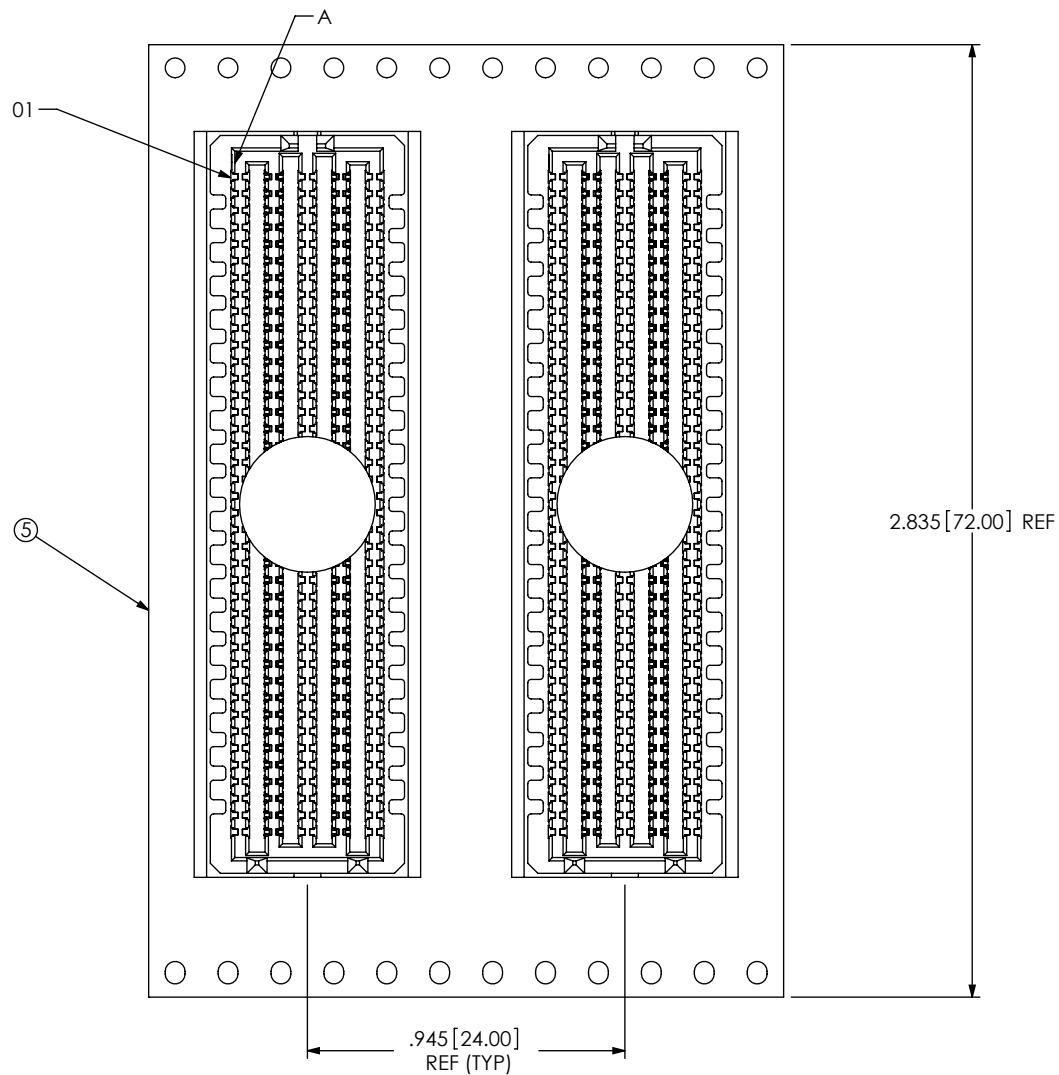
DWG. NO.

ASP-134604-01

BY: G. PURVIS 11/07/2007 SHEET 1 OF 4

1	SEAM-40-03.5-10-A	1.0000	VECTRA E130i, COLOR: BLACK
2	T-1M36-03.5-S	160.00	BRUSH ALLOY 390HT
3	SDT-645-012-02	160.00	SOLDER 95.5% TIN/3.8% SILVER .7% COPPER
4	K-DOT-.404-.500-.005	1.0000	POLYIMIDE FILM
5	CT-SEAM033MS	1.0000	CONDUCTIVE POLYMER

F:\dwg\sw\asp\134000\ASP-134604-01.SLDDRW



USER DIRECTION OF UNREELING →
POCKET NOT DETAILED

PACKAGING VIEW

PROPRIETARY NOTE

THIS DOCUMENT CONTAINS INFORMATION
CONFIDENTIAL AND PROPRIETARY TO
SAMTEC, INC. AND SHALL NOT BE REPRODUCED
OR TRANSFERRED TO OTHER DOCUMENTS OR
DISCLOSED TO OTHERS OR USED FOR ANY
PURPOSE OTHER THAN THAT WHICH IT WAS
OBTAINED WITHOUT THE EXPRESSED WRITTEN
CONSENT OF SAMTEC, INC.

SHEET SCALE: 1:2

samtec

520 PARK EAST BLVD., NEW ALBANY, IN 47150
PHONE: 812-944-6733 FAX: 812-948-5047
e-Mail: info@SAMTEC.com code: 55322

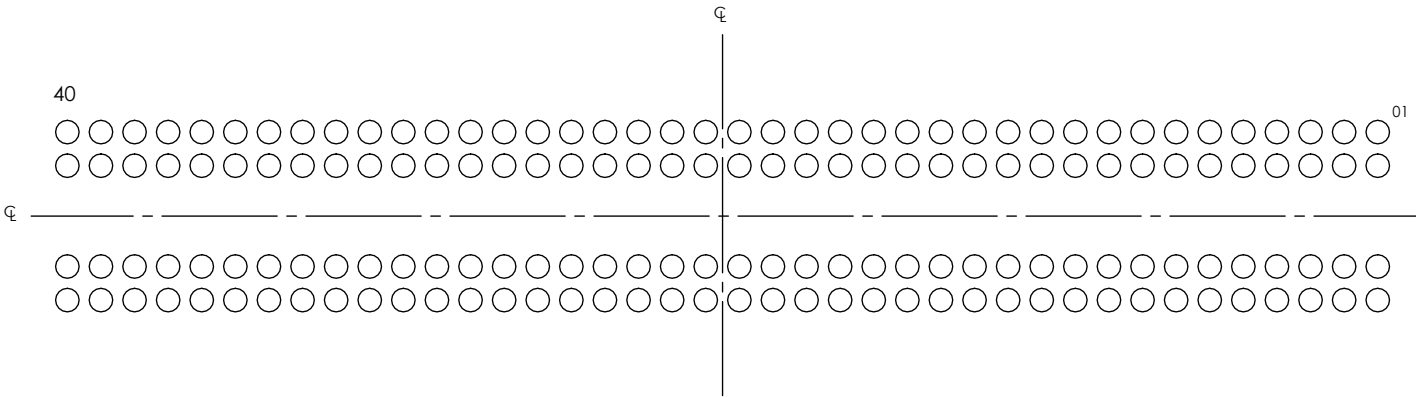
DESCRIPTION:
.050 PITCH TERMINAL ARRAY ASSEMBLY

DWG. NO.
ASP-134604-01

BY: G. PURVIS 11/07/2007 SHEET 3 OF 4

RECOMMENDED STENCIL LAYOUT FOR ASP-134604-01

NOTE:
STENCIL TO BE .0060 [.152] THICK.



ALL DIMENSIONS ARE SYMMETRIC ABOUT THE CENTERLINE

PROPRIETARY NOTE

THIS DOCUMENT CONTAINS INFORMATION
CONFIDENTIAL AND PROPRIETARY TO
SAMTEC, INC. AND SHALL NOT BE REPRODUCED
OR TRANSFERRED TO OTHER DOCUMENTS OR
DISCLOSED TO OTHERS OR USED FOR ANY
PURPOSE OTHER THAN THAT WHICH IT WAS
OBTAINED WITHOUT THE EXPRESSED WRITTEN
CONSENT OF SAMTEC, INC.



520 PARK EAST BLVD, NEW ALBANY, IN 47150
PHONE: 812-944-6733 FAX: 812-948-5047
e-Mail: info@SAMTEC.com code: 55322

SHEET SCALE: 1:2

DESCRIPTION:
.050 PITCH TERMINAL ARRAY ASSEMBLY

DWG. NO.
ASP-134604-01

BY: G. PURVIS 11/07/2007 SHEET 4 OF 4